



**formül®**



Made in  
Turkey

**CATALOGO  
DE PRODUCTOS**

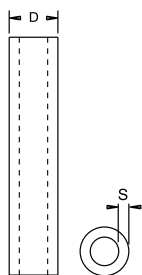
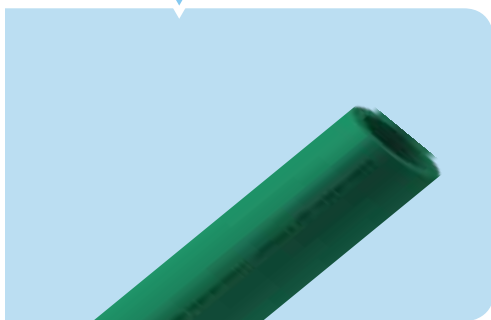


*formül*<sup>®</sup>

**TUBOS Y  
ACCESORIOS  
PP-R**

**1**

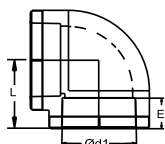
## TUBO PN 20



TUBO | PN20

Codigo	Diam. ( $\phi$ )	S	D	Embalaje (4 mt.)
FTF20200	20	1.9	20.3	35
FTF20250	25	2.3	25.3	25
FTF20320	32	2.9	32.3	15
FTF20400	40	3.7	40.4	10
FTF20500	50	4.6	50.5	6
FTF20630	63	5.8	63.6	5
FTF20750	75	6.8	75.7	3

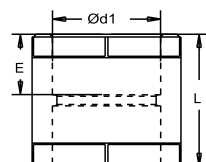
## CODO 90°



CODO FUSION 90° | PN25

Codigo	Diam. ( $\phi$ )	$\phi$ d1	L	E	Embalaje (pieza)
FCO20000	20	19.5	23	14.5	400
FCO25000	25	24.5	25	16	250
FCO32000	32	31.5	28	18	125
FCO40000	40	39.4	32	20.5	60
FCO50000	50	49.4	37	23.5	35
FCO63000	63	62.5	54	27.5	15
FCO75000	75	74.2	60	31	12

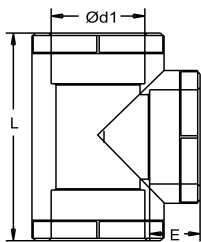
## CUPLA



CUPLA FUSION | PN25

Codigo	Diam. ( $\phi$ )	$\phi$ d1	L	E	Embalaje (pieza)
FUS20000	20	19.5	34	14.5	600
FUS25000	25	24.5	37	16	300
FUS32000	32	31.5	41	18	200
FUS40000	40	39.4	45	20.5	100
FUS50000	50	49.4	52	23.5	60
FUS63000	63	62.5	60	27.5	36
FUS75000	75	74.2	65	31	24

## TEE



TEE FUSION | PN25

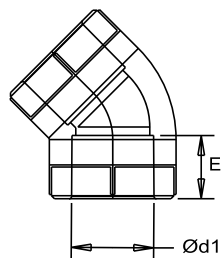
Codigo	Diam. ( $\phi$ )	$\phi$ d1	L	E	Embalaje (pieza)
FTE20000	20	19.5	52	14.5	250
FTE25000	25	24.5	59	16	150
FTE32000	32	31.5	70	18	80
FTE40000	40	39.4	82	20.5	40
FTE50000	50	49.4	100	23.5	25
FTE63000	63	62.5	120	27.5	16
FTE75000	75	74.2	137	31	10

TEE REDUCCION FUSION | PN25

Codigo	Diametros	$\phi$ d1	E1	$\phi$ d2	E2	$\phi$ d3	E3	Embalaje (pieza)
FTR25200	25/20/25	24.5	16	19.5	14.5	24.5	16	200

## PN25 | TEE REDUCCION FUSION

Codigo	Diam. ( $\phi$ )	D1	E	Embalaje (pieza)
FCA20000	20	19.5	14.5	500
FCA25000	25	24.5	16	300
FCA32000	32	31.5	18	125
FCA40000	40	39.4	20.5	80
FCA50000	50	49.4	23.5	40
FCA63000	63	62.5	27.5	20
FCA75000	75	74.2	31	15

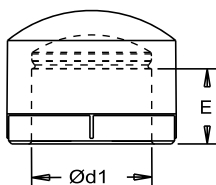


**CODO 45°**



## PN25 | TAPA H FUSION

Codigo	Diam. ( $\phi$ )	$\phi$ d1	E	Embalaje (pieza)
FTA20000	20	19.5	14.5	750
FTA25000	25	24.5	16	500
FTA32000	32	31.5	18	250
FTA40000	40	39.4	20.5	150
FTA50000	50	49.4	23.5	80
FTA63000	63	62.5	27.5	50
FTA75000	75	74.2	31	25

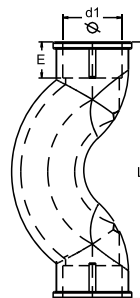


**TAPA**



## PN25 | CURVA CORTA H FUSION

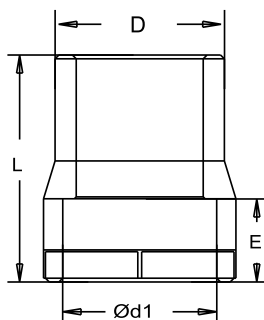
Codigo	Diam. ( $\phi$ )	$\phi$ d1	E	L	Embalaje (pieza)
FSCC20000	20	19.5	14.5	86	200
FSCC25000	25	24.5	16	95	125
FSCC32000	32	31.5	18	117	60



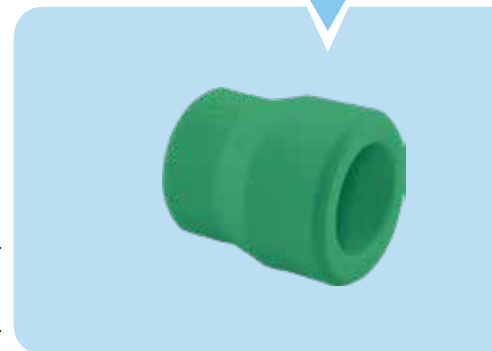
**CURVA CORTA H**



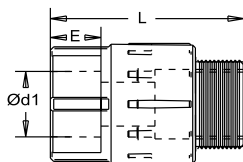
Codigo	Diam. ( $\phi$ )	$\phi$ d1	L	E	D	Embalaje (pieza)
FBR25200	25/20	19.5	39	14.5	25	600
FBR32200	32/20	19.5	39	14.5	32	400
FBR32250	32/25	24.5	43	16	32	300
FBR40250	40/25	24.5	43	16	40	200
FBR40320	40/32	31.5	48	18	40	150
FBR50250	50/25	24.5	43	16	50	100
FBR50320	50/32	31.5	48	18	50	100
FBR50400	50/40	39.4	52	20.5	50	80
FBR63320	63/32	31.5	48	18	63	60
FBR63500	63/50	49.4	60	23.5	63	50



**BUJE REDUCCION**



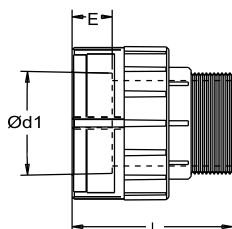
## CUPLA CON INSERTO M



## CUPLA CON INSERTO M | PN25

Codigo	Diam. (ø)	Ø d1	L	E	Embalaje (pieza)
FUIM20120	20 x 1/2"	19.5	55	14.5	125
FUIM25120	25 x 1/2"	24.5	57	16	100
FUIM25340	25 x 3/4"	24.5	57	16	80
FUIM32340	32 x 3/4"	31.5	60	18	60
FUIM32100	32 x 1"	31.5	60	18	60

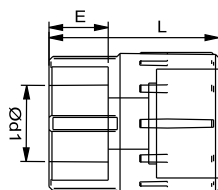
## CUPLA CON INSERTO M HEXAGONAL



## CUPLA CON INSERTO M HEXAGONAL | PN25

Codigo	Diam. (ø)	Ø d1	L	E	Embalaje (pieza)
FUIM401140	40 x 1 1/4"	39.4	80	20.5	30
FUIM501120	50 x 1 1/2"	49.4	90	23.5	15
FUIM632000	63 x 2"	62.5	95	27.5	10
FUIM752120	75 x 2 1/2"	74.2	105	31	6

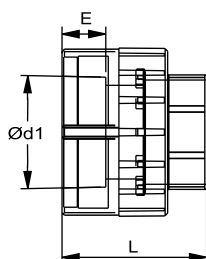
## CUPLA CON INSERTO H



## CUPLA CON INSERTO H | PN25

Codigo	Diam. (ø)	Ø d1	L	E	Embalaje (pieza)
FUIF20120	20 x 1/2"	19.5	40	14.5	125
FUIF20340	20 x 3/4"	19.5	40	14.5	125
FUIF25120	25 x 1/2"	24.5	42	16	125
FUIF25340	25 x 3/4"	24.5	42	16	100
FUIF32340	32 x 3/4"	31.5	44	18	50
FUIF32100	32 x 1"	31.5	44	18	75

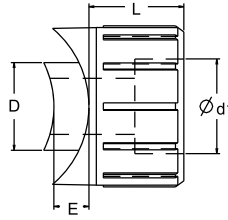
## CUPLA CON INSERTO H HEXAGONAL



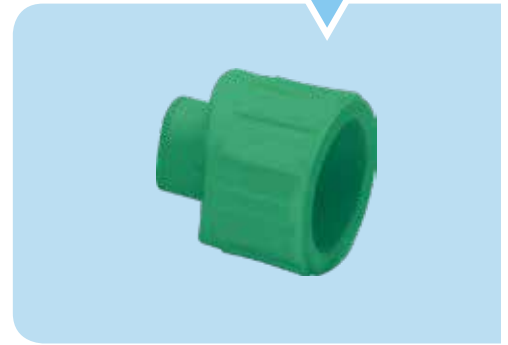
## CUPLA CON INSERTO H HEXAGONAL | PN25

Codigo	Diam. (ø)	Ø d1	L	E	Embalaje (pieza)
FUIF401140	40 x 1 1/4"	39.4	65	20.5	30
FUIF501120	50 x 1 1/2"	49.4	70	23.5	20
FUIF632000	63 x 2"	62.5	75	27.5	10
FUIF752120	75 x 2 1/2"	74.2	80	31	8

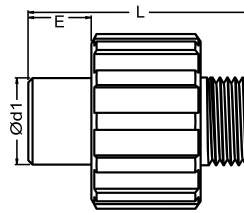
Codigo	Diam. ( $\sigma$ )	$\varnothing$ d1	D	L	E	Embalaje (pieza)
FDER20000	20	19.5	20.3	22	14.5	300
FDER25000	25	24.5	25.3	25	16	200
FDER32000	32	31.5	32.3	30	18	100



**DERIVACION**



Codigo	Diam. ( $\sigma$ )	$\varnothing$ d1	L	E	Embalaje (pieza)
FINM20120	20 x 1/2"	20.3	52	14.5	125
FINM25120	25 x 1/2"	25.3	52	16	125
FINM25340	25 x 3/4"	25.3	54	16	75

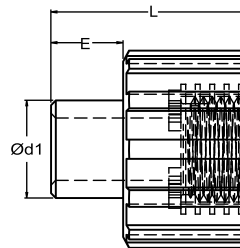


**INSERTO M**

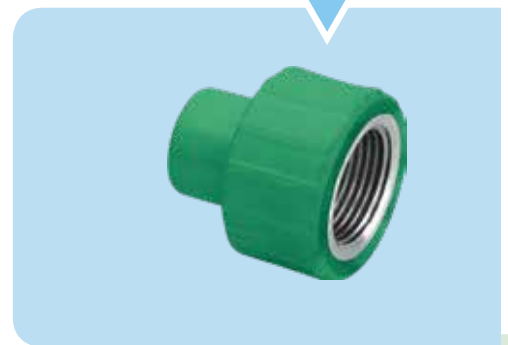


**PN25 | INSERTO HEMBRA**

Codigo	Diam. ( $\sigma$ )	$\varnothing$ d1	L	E	Embalaje (pieza)
FINF20120	20 x 1/2"	20.3	41	14.5	150
FINF25120	25 x 1/2"	25.3	41	16	150
FINF25340	25 x 3/4"	25.3	41	16	150



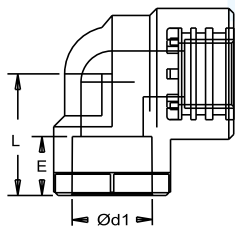
**INSERTO H**



Contactanos para  
**Solicitud de  
Medidas  
Especiales**



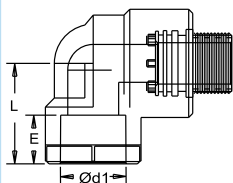
## CODO CON INSERTO H



### CODO 90° CON INSERTO HEMBRA | PN25

Codigo	Diam. ( ø )	Ø d1	L	E	Embalaje (pieza)
FCIF20120	20 x 1/2"	19.5	35	14.5	125
FCIF25120	25 x 1/2"	24.5	40	16	100
FCIF25340	25 x 3/4"	24.5	40	16	80
FCIF32100	32 x 1"	31.5	45	18	30

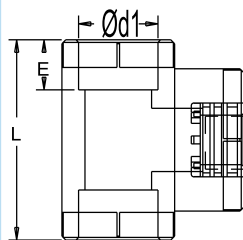
## CODO CON INSERTO M



### CODO 90° CON INSERTO MACHO | PN25

Codigo	Diam. ( ø )	Ø d1	L	E	Embalaje (pieza)
FCIM20120	20 x 1/2"	19.5	35	14.5	100
FCIM25120	25 x 1/2"	24.5	40	16	100
FCIM25340	25 x 3/4"	24.5	40	16	75
FCIM32100	32 x 1"	31.5	45	18	30

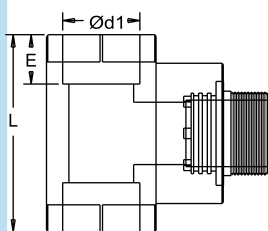
## TEE CON INSERTO H



### TEE NORMAL CON INSERTO HEMBRA | PN25

Codigo	Diam. ( ø )	Ø d1	L	E	Embalaje (pieza)
FTIF20120	20 x 1/2"	19.5	60	14.5	100
FTIF25120	25 x 1/2"	24.5	52	16	75
FTIF25340	25 x 3/4"	24.5	66	16	50
FTIF32100	32 x 1"	31.5	80	18	30

## TEE CON INSERTO M

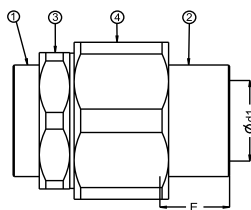


### TEE NORMAL CON INSERTO MACHO | PN25

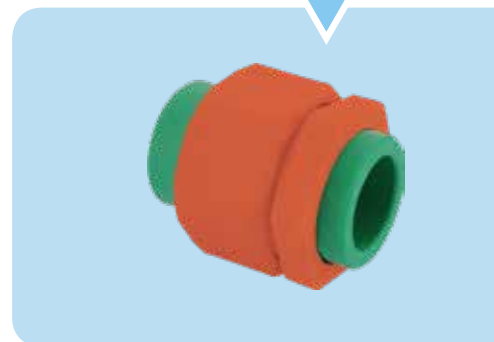
Codigo	Diam. ( ø )	Ø d1	L	E	Embalaje (pieza)
FTIM20120	20 x 1/2"	19.5	52	14.5	100
FTIM25120	25 x 1/2"	24.5	59	16	75
FTIM25340	25 x 3/4"	24.5	59	16	50
FTIM32100	32 x 1"	31.5	44	18	30

**PN25 | UNION DOBLE FUSION**

Codigo	Diam. ( $\phi$ )	$\phi$ d1	E	Embalaje (pieza)
FUP20000	20	19.5	14.5	100
FUP25000	25	24.5	16	60
FUP32000	32	31.5	18	50

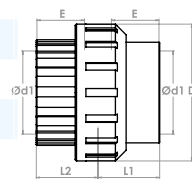


**UNION DOBLE**



**PN25 | UNION DOBLE FUSION**

Codigo	Diam. ( $\phi$ )	$\phi$ d1	L1	L2	D1	Embalaje (pieza)
FUD20000	20	19	21.5	24.3	41.6	200
FUD25000	25	24.1	27.6	25.7	52	125
FUD32000	32	31	25.2	30.1	58.9	80
FUD40000	40	39.4	29	39	82	50
FUD50000	50	49.4	34	45	92	30
FUD63000	63	62.5	41	55	112	16

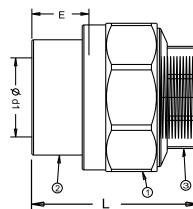


**UNION DOBLE**



**PN25 | UNION PLASTICA CON ROSCA HEMBRA**

Codigo	Diam. ( $\phi$ )	$\phi$ d1	E	L	Embalaje (pieza)
FUDRF20120	20 x 1/2"	19.5	14.5	50	100
FUDRF25340	25 x 3/4"	24.5	16	55	80
FUDRF32100	32 x 1"	31.5	18	57	60

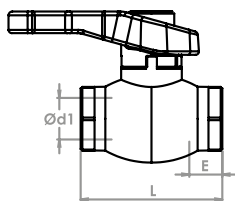


**UNION PLASTICA CON ROSCA H**





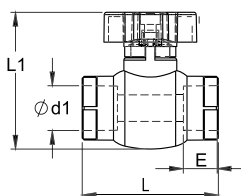
## VALVULA ESFERICA



## VALVULA ESFERICA FUSION | PN25

Codigo	Diam. (ø)	Ø d1	L	E	Embalaje (pieza)
FVEM20000	20	19.5	66	14.5	50
FVEM25000	25	24.5	73	16	40
FVEM32000	32	31.5	88	18	20
FVEM40000	40	39.4	105	20.5	12
FVEM50000	50	49.4	125	23.5	8
FVEM63000	63	62.5	150	27.5	4

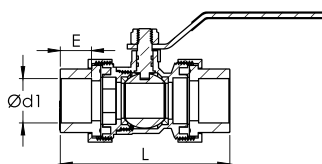
## VALVULA ESFERICA MANIJA CORTA



## VALVULA ESFERICA MANIJA CORTA FUSION | PN25

Codigo	Diam. (ø)	Ø d1	L	E	Embalaje (pieza)
FVEEC20000	20	19.5	59	14.5	90
FVEEC25000	25	24.5	64	16	60
FVEEC32000	32	31.5	75	18	40

## VALVULA ESFERICA CON DOBLE UNION

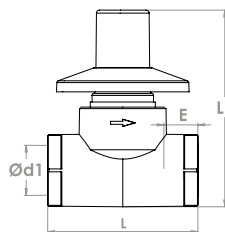


## VALVULA ESFERICA CON DOBLE UNION FUSION | PN25

Codigo	Diam. (ø)	Ø d1	L	E	Embalaje (pieza)
FVEMD20000	20	19.5	85	14.5	40
FVEMD25000	25	24.5	94	16	30
FVEMD32000	32	31.5	100	18	20
FVEMD40000	40	39.4	116	20.5	15
FVEMD50000	50	49.4	131	23.5	9
FVEMD63000	63	62.5	148	27.5	4

**PN25 | LLAVE DE PASO CON CAPUCHON CROMADO FUSION**

Codigo	Diam. ( $\phi$ )	$\phi$ d1	L	L1	E	Embalaje (pieza)
FLPC20000	20	19.5	73	93	14.5	30
FLPC25000	25	24.5	73	94	16	25
FLPC32000	32	31.5	86	105	18	25

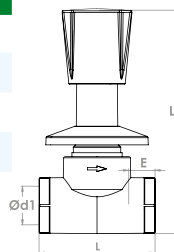


**LLAVE DE PASO CON CAPUCHON**



**PN25 | LLAVE DE PASO TREBOL CROMADO FUSION**

Codigo	Diam. ( $\phi$ )	$\phi$ d1	L	L1	E	Embalaje (pieza)
FLPT20000	20	19.5	73	137	14.5	25
FLPT25000	25	24.5	73	140	16	20
FLPT32000	32	31.5	86	150	18	15

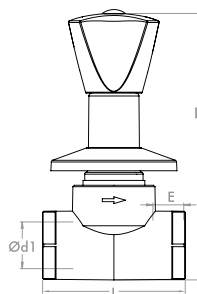


**LLAVE DE PASO TREBOL**



**PN25 | LLAVE DE PASO TRIA. CROMADO FUSION**

Codigo	Diam. ( $\phi$ )	$\phi$ d1	L	L1	E	Embalaje (pieza)
FLPCT20000	20	19.5	73	130	14.5	25
FLPCT25000	25	24.5	73	136	16	20
FLPCT32000	32	31.5	86	146	18	15



**LLAVE DE PASO TRIA**



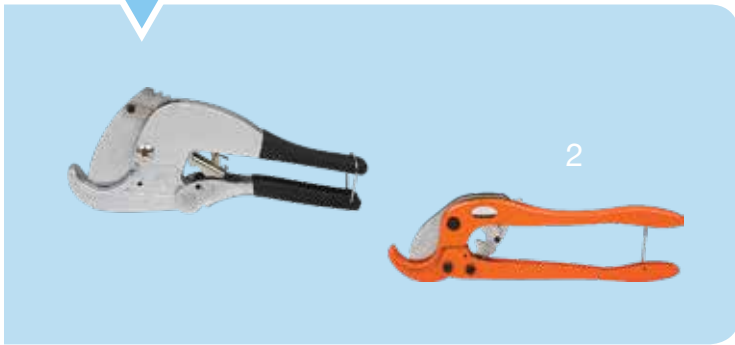


*formül*<sup>®</sup>

2

HERRAMIENTAS

**TIJERA CORTATUBOS**



**TIJERA CORTATUBOS**

Codigo	
FTJ12420	Diametros de 12-42 mm.
FTJ28630	Diametros de 28-63 mm.
FTJ27750	Diametros de 27-75 mm.

**KIT TERMOFUSORA MINI**



**KIT TERMOFUSORA MINI**

Codigo	
FFBM20320	Termofusora 800W - 200V

**BOMBA HIDRAULICA MANUAL**



**BOMBA HIDRAULICA MANUAL 0-60 BARES**

Codigo	
FBOM60000	Bomba Hidraulica 60 Bares



**PN25 | BOQUILLA PARA FUSION**

Codigo	Diam. ( ø )
FBON20000	20
FBON25000	25
FBON32000	32
FBON40000	40
FBON50000	50
FBON63000	63
FBON75000	75

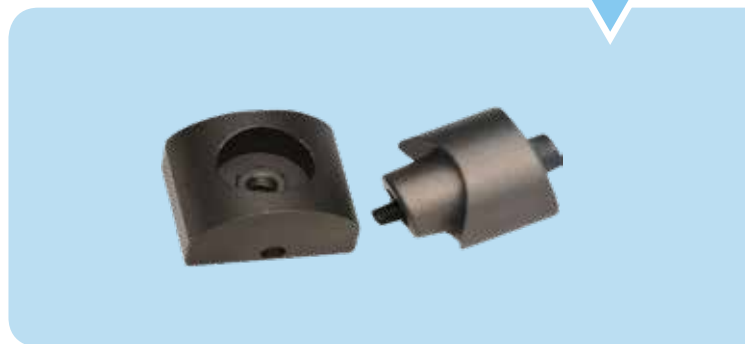
**BOQUILLAS PARA FUSION**



**PN25 | BOQUILLA DE DERIVACION**

Codigo	Diam. ( ø )
FBOD63200	63/20

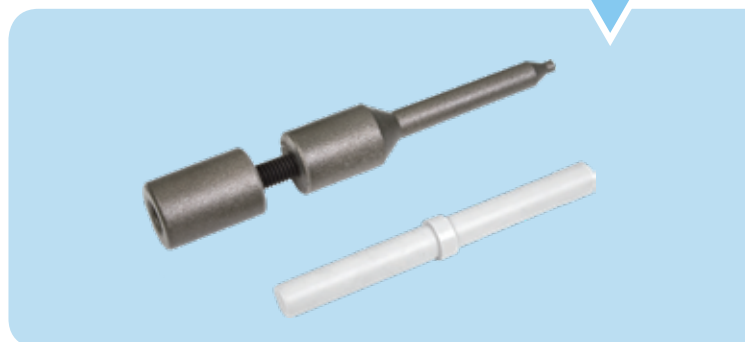
**BOQUILLA DE DERIVACION**



**PN25 | BOQUILLA DE DERIVACION**

Codigo	
FBOR00	

**BOQUILLA DE REPARACION**



# formül®

## REPESANTANTE EXCLUSIVO

**ai** importadora  
**alarcon**

[www.importadora-alarcon.com.bo](http://www.importadora-alarcon.com.bo)

[info@importadora-alarcon.com.bo](mailto:info@importadora-alarcon.com.bo)

[ventas@importadora-alarcon.com.bo](mailto:ventas@importadora-alarcon.com.bo)

[ventascbba@importadora-alarcon.com.bo](mailto:ventascbba@importadora-alarcon.com.bo)



### CASA MATRIZ

Av. Paragua calle 6 Esq. Calle Jauru # 2500. Frente a la cacha Amboro. Plena Esquina.  
**Santa Cruz**

**T:** 355 7100  
**C:** 798 77250



### SUCURSAL 1

Av. Carlos Blanco Galindo  
Km. 3 1/2 Nro.: 3081  
**Cochabamba**

**T:** 424 0428  
**C:** 798 98135



### SUCURSAL 2

Av. Barrientos  
Esq. Magdalena N° 1715  
**Cochabamba**

**T:** 424 0428  
**C:** 798 89792

